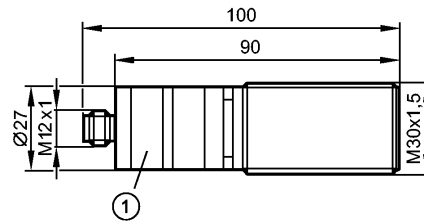


**OID200**

OIDLCPKG/US

Photoelectric sensors



1: setting ring

Made in Germany



**Product characteristics**

Photoelectric distance sensor
Connector
Background suppression
Visible laser light, protection class 2 laser
setting ring
manually adjustable [cm/inch]
Measuring range 0.03...2 m
Background suppression ...20 m

**Electrical data**

Electrical design	DC PNP
Operating voltage [V]	10...30 DC
Current consumption [mA]	< 75; @ 24 V DC
Life expectancy typ. [h]	50000
Type of light	Red light 650 nm
Protection class	III
Reverse polarity protection	yes

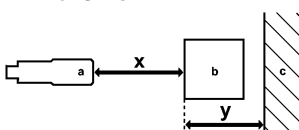
**Outputs**

Output function	2 switching outputs normally open / closed complementary
Current rating [mA]	2 x 100
Short-circuit protection	pulsed
Overload protection	yes
Switching frequency [Hz]	11

**Range**

Background suppression	...20 m
Light spot diameter [mm]	< 5 ( Range 2 m )
Hysteresis [%]	< 5; black (6 % remission) at max. range

**Accuracy graph**

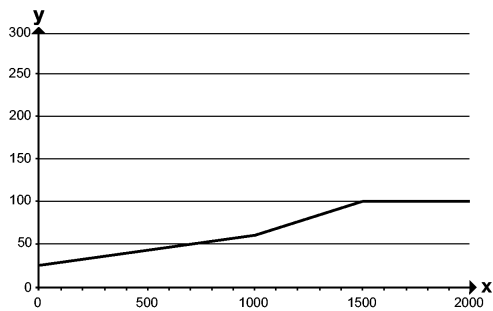


- a: sensor
- b: object
- c: background
- x: distance sensor / object
- y: min. distance object / background

## OID200

OIDLCPKG/US

Photoelectric sensors



Values in [mm]

### Measuring / setting range

Measuring range	[m]	0.03...2
Sampling rate	[Hz]	33

### Interfaces

IO-Link Device		
Transfer type		COM2 (38.4 kBaud)
IO-Link revision		1.1
SDCI standard		IEC 61131-9 CDV
IO-Link Device ID		373d / 00 01 75h
SIO mode		yes
Process data analogue		-
Process data binary		2
Min. process cycle time	[ms]	6.6

### Environment

Ambient temperature	[°C]	-25...60, at ta < -10 °C warm-up is necessary, laser is off
Protection		IP 65 / IP 67

### Tests / approvals

EMC		EN 60947-5-2
MTTF	[Years]	157

### Mechanical data

Housing materials		housing: stainless steel; window: PMMA; LED window: polycarbonate; PBT (Pocan); PC (Makrolon); FPM (Viton)
Weight	[kg]	0.209

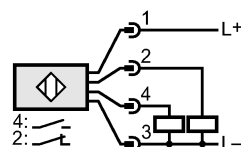
### Displays / operating elements

Display		Switching status LED yellow Operation LED green
---------	--	--

### Electrical connection

Connection		M12 connector
------------	--	---------------

### Wiring



4: OUT / IO-Link

### Accessories

**OID200**

OIDLCPKG/US

**Photoelectric sensors**

Accessories (included)	2 lock nuts VA (stainless steel); M30
------------------------	---------------------------------------

**Remarks**

Remarks	Caution: Laser Light Power $\leq$ 4.0 mW wavelength = 650 nm pulse 1.3 ns Do not stare into beam Avoid exposure Class 2 laser product EN 60825-1:2007-10 extraneous light on the object max.: 8 klx cULus - Class 2 source required
---------	---

Pack quantity	[piece]	1
---------------	---------	---